

DISTRIBUTORS / DISTRIBUTORI



			D30	D3..	D4.. / D5..	D90	D250
			LS	LS	HS	HS	HS
Speed	[rpm]	cont.	300	300	1600	700	500
		max.	500	500	2400	1200	1000
Pressure	[bar]	cont.	140	250	250	250	250
		max.	280	500	500	500	500
Flow	[l/min]	cont.	200	200	200	500	1000
		max.	400	400	400	1000	2000

HS = High Speed / *Alta Velocità*
 LS = Low Speed / *Bassa Velocità*

D40 is the standard distributor for GM05, GM1, GM2, GM3, GM4, GM5A, GM6, GM7 series.
 D90 is standard for GM6 and GM7 series.

*D40 è il distributore standard per le serie GM05, GM1, GM2, GM3, GM4, GM5A, GM6, GM7.
 D90 è il distributore standard per le serie GM6 and GM7.*

Special distributors can be supplied that ensure silent running over a wide range of pressure and speed values.

Su richiesta sono disponibili distributori speciali che assicurano il funzionamento quasi silenzioso del motore entro un'ampia gamma di pressioni e velocità.

NB: the purge valve in distributors D481, D491, D311 discharge 20 lit/min at 20 bar: adequate provision should be provided to protect the charge pump.

NB: le valvole di scambio montate nei distributori D481, D491, D311 permettono una portata di 20 lit/min at 20 bar: è importante assicurare la protezione della pompa di alimentazione.

COMBINATIONS / COMBINAZIONI

	GM03	GM05	GM1	GM2	GM3	GM4	GM5	GM6	GM7
D3.. / D4.. / D5..	■	■	■	■	■	■	■	-	-
D90	-	-	-	-	■	■	■	■	■
D250	-	-	-	-	-	-	-	■	■

- ALWAYS POSSIBLE / SEMPRE POSSIBILE
- POSSIBLE ON REQUEST / POSSIBILE SU RICHIESTA
- NOT POSSIBLE / NON POSSIBILE

	PORTS	HS/LS	DESCRIPTION
D30	3/4" BPS ⁽¹⁾	LS	Short distributor
D31	3/4" BSP	LS	
D310	1" BSP	LS	
D311	1" BSP	LS	
D312	3/4" BSP	LS	
D313	1" BSP	LS	
D314	1" BSP	LS	
D316	1"5/16"-12	LS	
D320	1" BSP	LS	
D322	3/4" BSP	LS	Distributor with anti-cavitation valve
D36	1/16"-12	LS	
D37	1" SAE 3000psi	LS	
D40	1" BSP	HS	Standard for all motors except GM7
D416	1"5/16"-12	HS	
D47	1" SAE 3000psi	HS	
D48	1" BSP	HS	With double pressure relief valves, 420bar, 150l/min
D481	1" BSP	HS	As D48, with purge valve 20l/min at 20bar
D49	1" BSP	HS	With double pressure relief valves, 210bar, 80l/min
D491	1" BSP	HS	As D49, with purge valve 20l/min at 20bar
D504	1" BSP	HS	With double overcentre valve, 10:1, 120l/min, 270bar+shuttle v.
D51	1" BSP	HS	With single overcentre valve, 10:1, 120l/min, 270bar+shuttle valve
D510	1" BSP	HS	Short circuit freewheeling
D524	1" BSP	HS	With double overcentre valve, 4,5:1, 60l/min, 250bar and high pressure pilot line

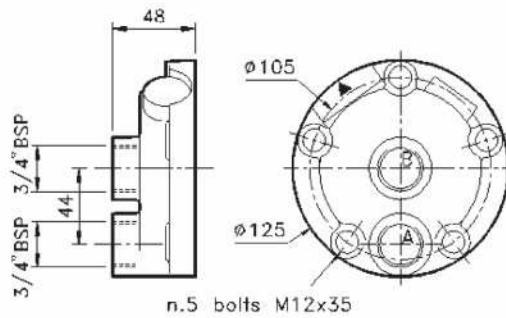
HS = High Speed; LS = Low Speed; ⁽¹⁾ = Axial Ports

D30

Light distributor with axial port Connections,. NB: cont. press. 140 bar; peak pressure 280 bar.

Distributore leggero con attacchi assiali. NB: press. cont. 140 bar; press. di picco 280 bar.

Weight : 2.5 kg



D31

Distributor with 3/4" ports.

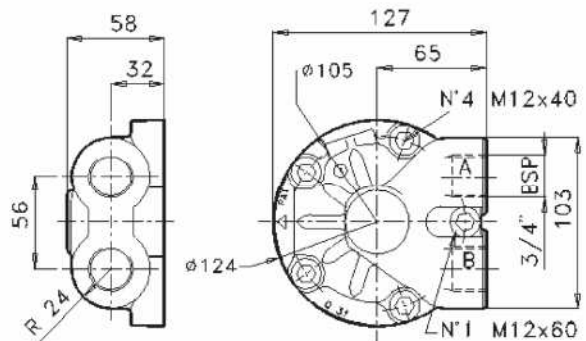
Distributore con attacchi da 3/4".

D310

As D31, with 1" ports.

Come D31, con attacchi da 1".

Weight : 4 kg



D311

Distributor with low pressure purge valve. Max flow 20 lit/min at 20 bar.

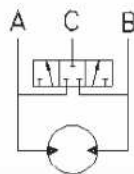
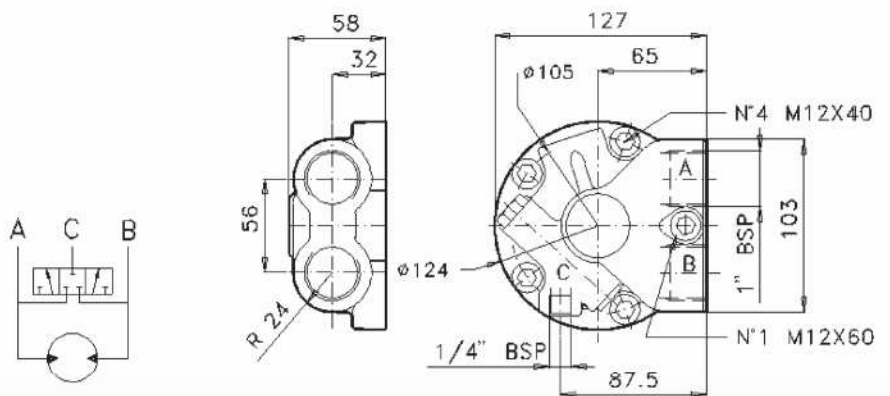
Distributore con valvola di scambio. Portata max 20 lit/min a 20 bar.

D312

As D311, with 3/4" ports.

Come D311 con attacchi da 3/4".

Weight : 4.5 kg

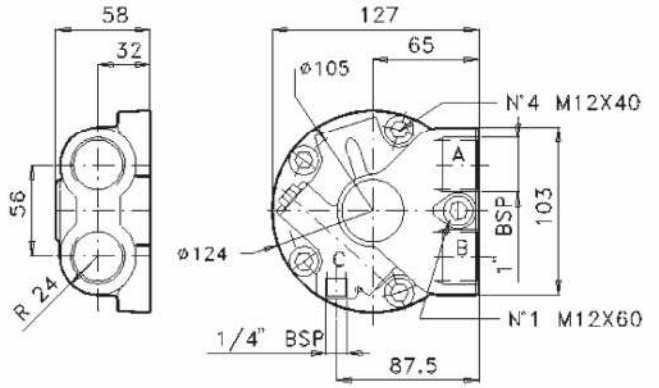
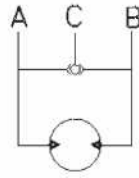


D313

Distributor with shuttle valve for high Pressure pilot.

Distributore con valvola di pilotaggio Ad alta pressione.

Weight : 4.5 kg

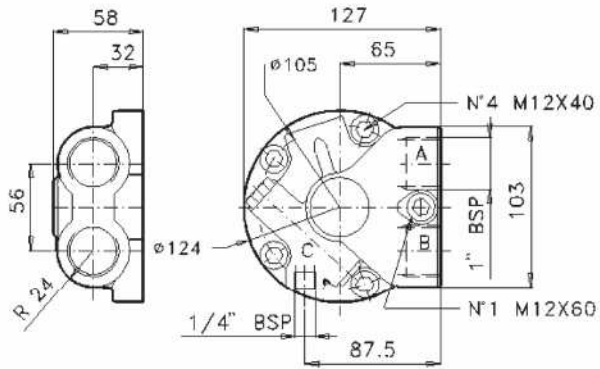
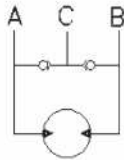


D314

Distributor with anti-cavitation valve.

Distributore con valvola anti-cavitaizone.

Weight : 4.5 kg

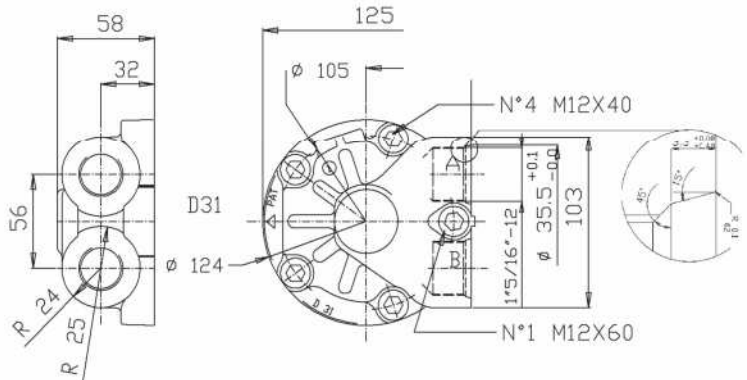


D316

Distributor with 1"5/16"-12 ports.

Distributore con attacchi 1"5/16"-12.

Weight : 5 kg

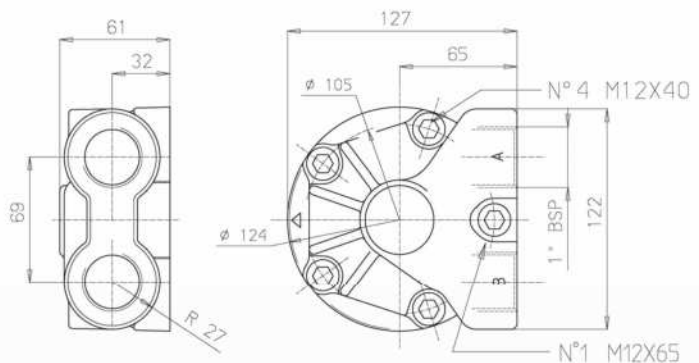


D320

Distributor 1" BSP ports.

Distributore con attacchi 1" BSP.

Weight : 4.5 kg

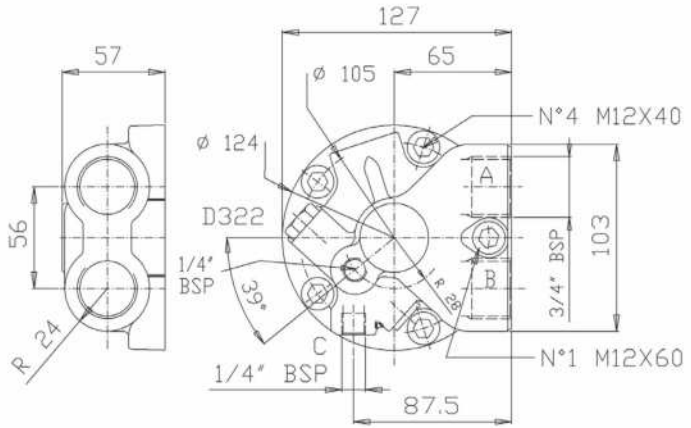
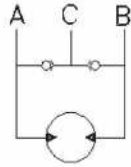


D322

Distributor with anti-cavitation valve.

Distributore con valvola anti-cavitaizone.

Weight : 4.5 kg

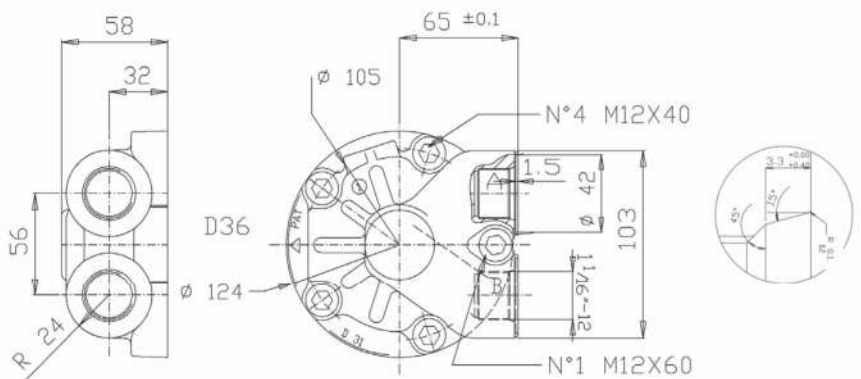


D36

Distributor with 1/16"-12 ports.

Distributore con attacchi 1/16"-12.

Weight : 4 kg

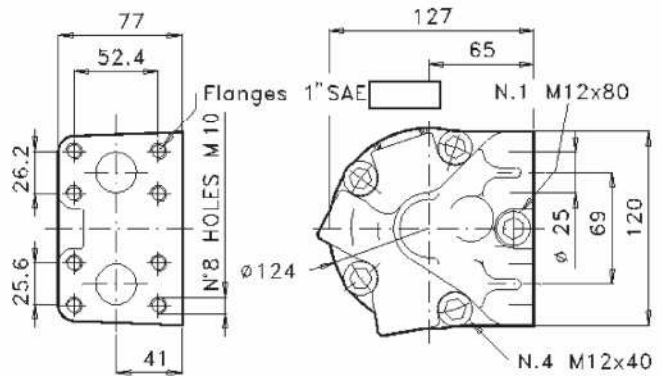


D37

Distributor with SAE 1" 3000 psi flanges.

Distributore con flange SAE 1" 3000 psi.

Weight : 5 kg

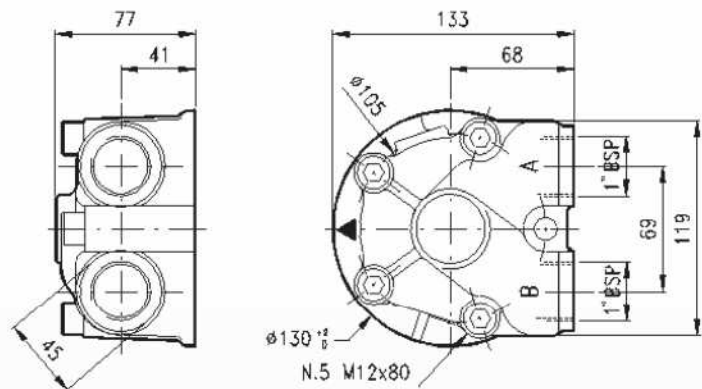


D40

Standard distributor for GM1, GM2, GM3, GM4 and GM5 series motors.

Distributore standard per motori delle Serie GM1, GM2, GM3, GM4 e GM5.

Weight : 5 kg

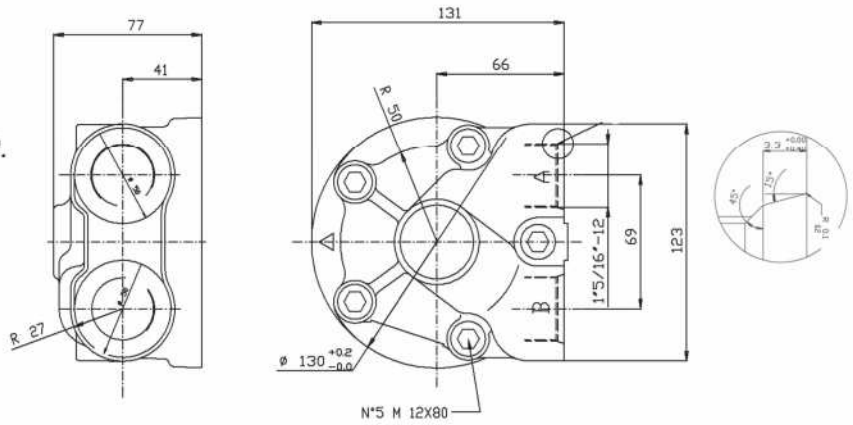


D416

Distributor with 1"5/16"-12 ports.

Distributore con attacchi da 1"5/16"-12.

Weight : 5 kg

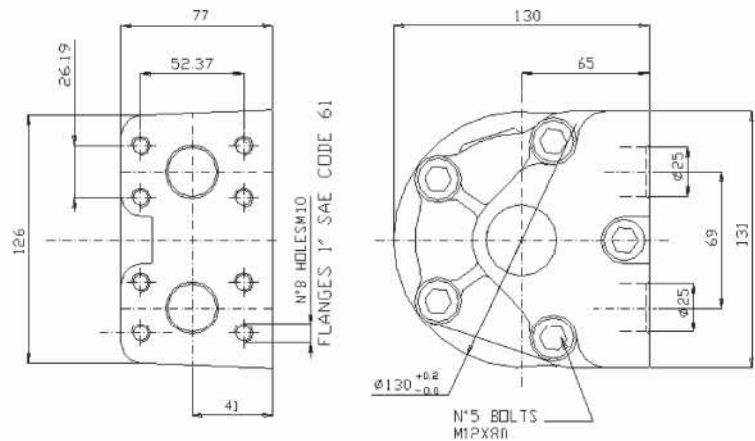


D47

Distributor with SAE 1" 3000 psi Flanges.

Distributore con flange SAE 1" 3000 psi.

Weight : 6 kg

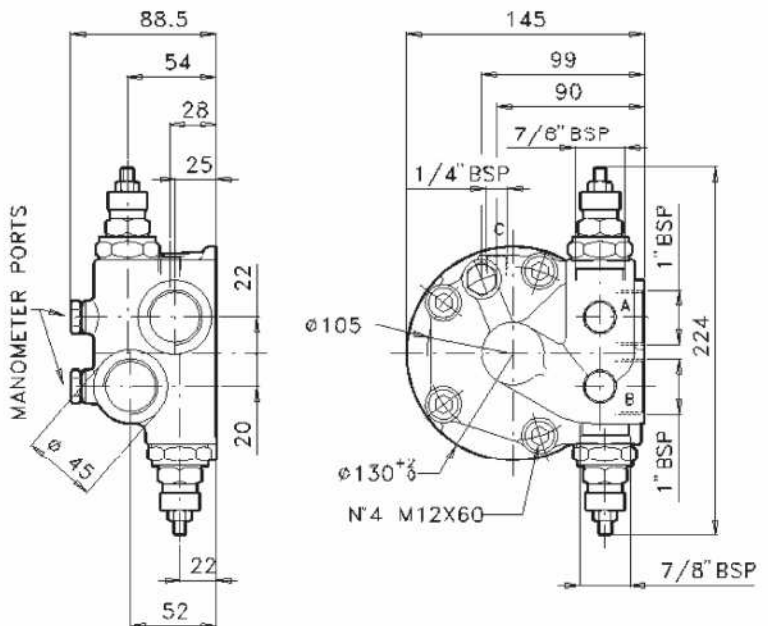


D48

Distributor with double sliding spool Pressure relief valves. Variable pressure settings, max 420 bar, max flow 150 lit/min.

Distributore con valvole di massima Incrociate. Taratura pressione Variabile, max 420 bar. Portata max 150 lit/min.

Weight : 6 kg

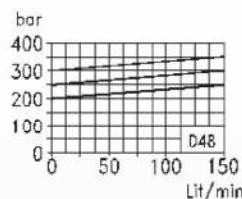
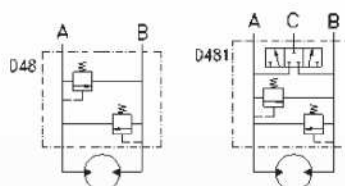


D481

As d48, with purge valve, 20 lit/min at 20 bar.

Come D48, con valvola di scambio, 20 lit/min a 20 bar.

Weight : 6 kg

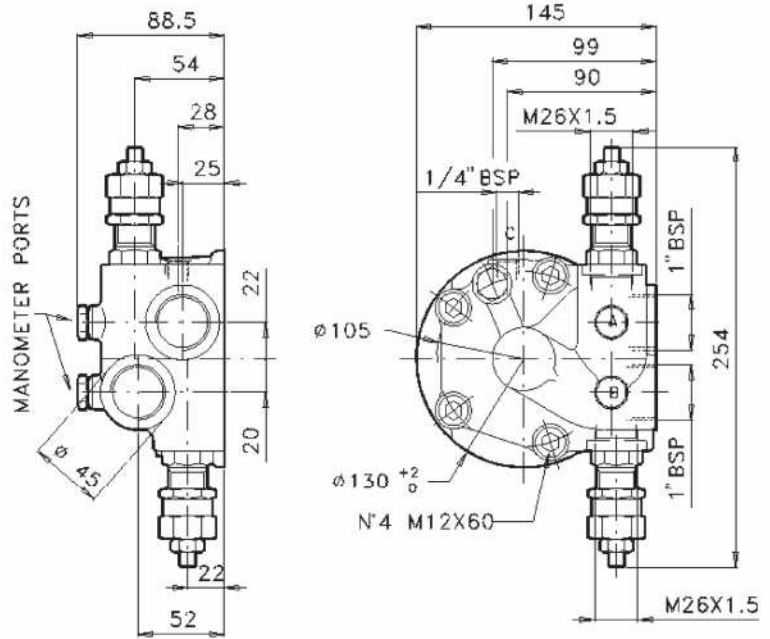


D49

Distributor with double sliding spool Pressure relief valves. Variable pressure settings, max 210 bar, max flow 80 lit/min.

Distributore con valvole di massima Incrociate. Taratura pressione Variabile, max 210 bar. Portata max 80 lit/min.

Weight : 6 kg

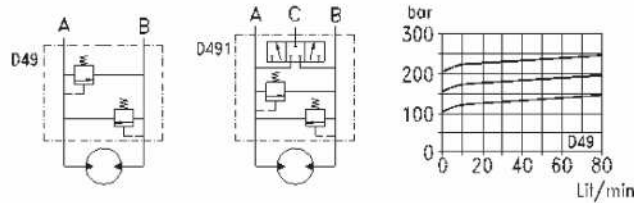


D491

As D49, with purge valve, 20 lit/min at 20 bar.

Come D49, con valvola di scambio, 20 lit/min a 20 bar.

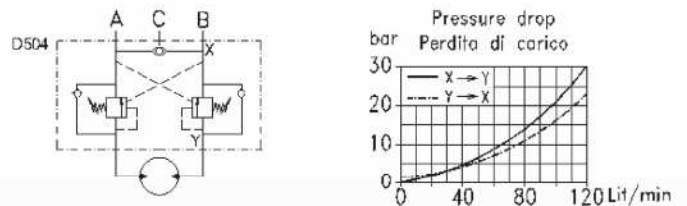
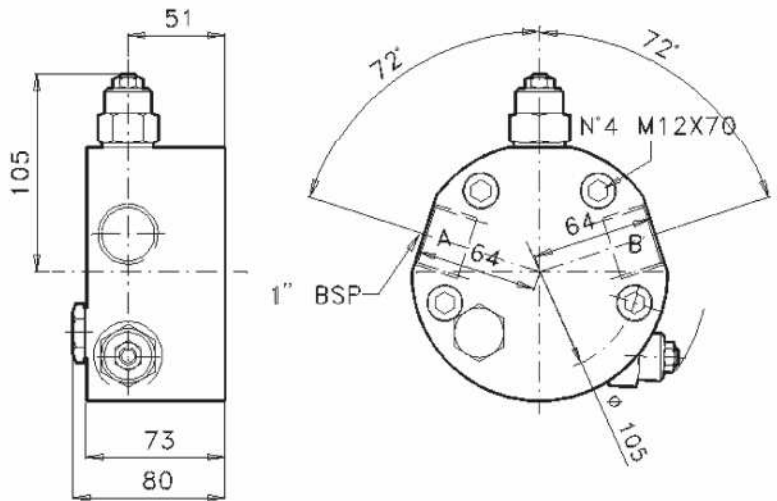
Weight : 6 kg



D504

Distributor with double overcentre Valve and high pressure pilot line (C). Max flow 120lit/min. Pilot ratio 10:1 Max pressure 265bar. Pressure setting = 1.3 x working pressure. Press. Setting range 100 to 350 bar Back-pressure in port B may adversely affect operation of the valve.

Distributore con doppia valvola di Bilanciamento e valvola di pilotaggio ad alta pressine (C). Portata max 120 lit/min. Rapporto di pilotaggio 10:1 Pressione max 265 bar Press. Di taratura = 1.3 x press. di lavoro. Gamma di taratura da 100 a 350 bar. Contropressione in port B può causare malfunzionamento della valvola.

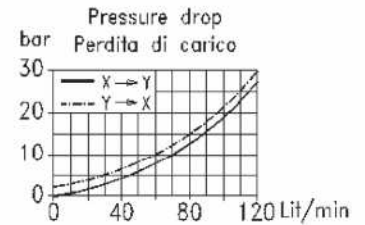
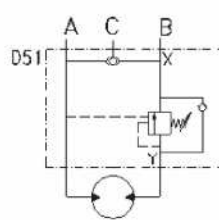
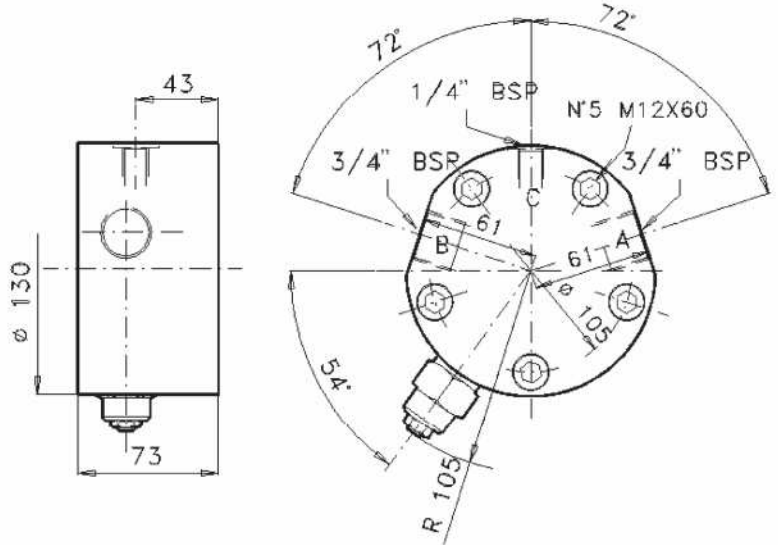


Weight : 5 kg

D51

Distributor with double overcentre Valve and high pressure pilot line (C).
 Max flow 120lit/min.
 Pilot ratio 10:1
 Max pressure 265bar.
 Pressure setting = 1.3 x working pressure.
 Press. Setting range 100 to 350 bar
 Back-pressure in port B may adversely affect operation of the valve.

*Distributore con doppia valvola di Bilanciamento e valvola di pilotaggio ad alta pressine (C).
 Portata max 120 lit/min.
 Rapporto di pilotaggio 10:1
 Pressione max 265 bar
 Press. Di taratura = 1.3 x press. di lavoro.
 Gamma di taratura da 100 a 350 bar.
 Contropressione in port B può causare malfunzionamento della valvola.*



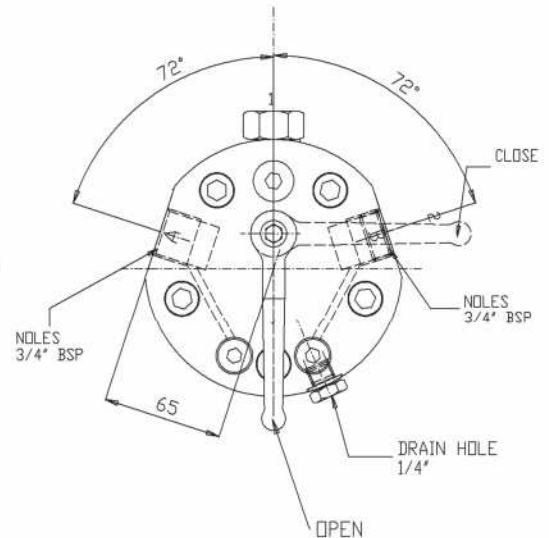
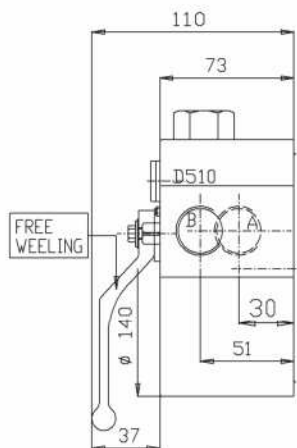
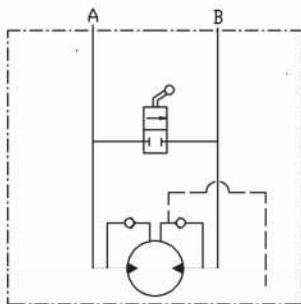
Weight : 5 kg

D510

Distributor for short circuit freewheeling.

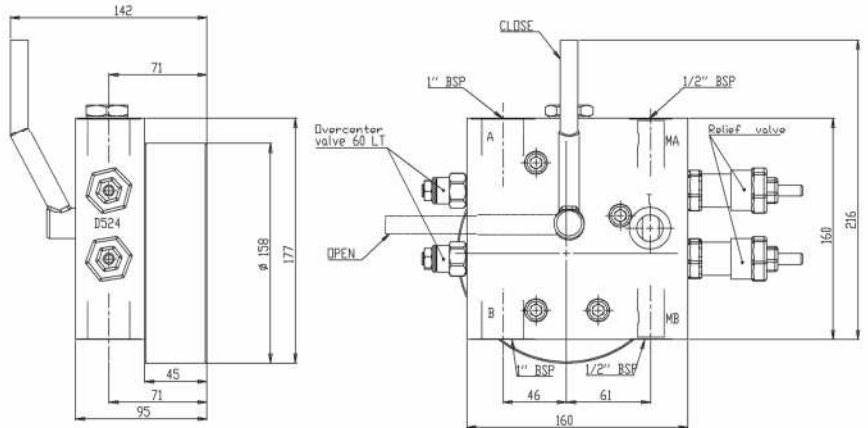
Distributore per freewheeling in corto circuito.

Weight : 5 kg



D524

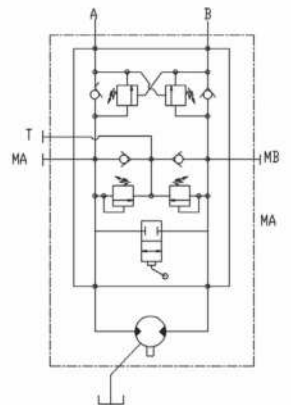
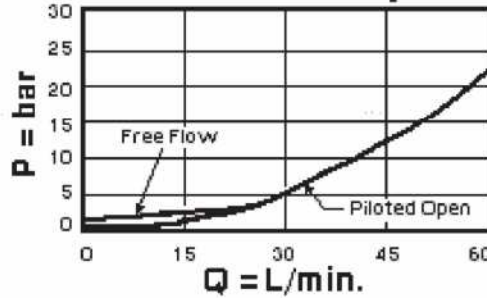
Distributor with double overcentre Valve and high pressure pilot line (C).
 Max flow 60 lit/min.
 Pilot ratio 4.5:1
 Max pressure 250bar.
 Pressure setting = 1.3 x working pressure.
 Press. Setting range 140 to 350 bar
 Back-pressure in port B may adversely affect operation of the valve.



*Distributore con doppia valvola di Bilanciamento e valvola di pilotaggio ad alta pressione (C).
 Portata max 60 lit/min.
 Rapporto di pilotaggio 4.5:1
 Pressione max 250 bar
 Press. Di taratura = 1.3 x press. di lavoro.
 Gamma di taratura da 140 a 350 bar.
 Contropressione in port B può causare malfunzionamento della valvola.*

Weight : 5 kg

Free Flow and Piloted Open Pressure Drop

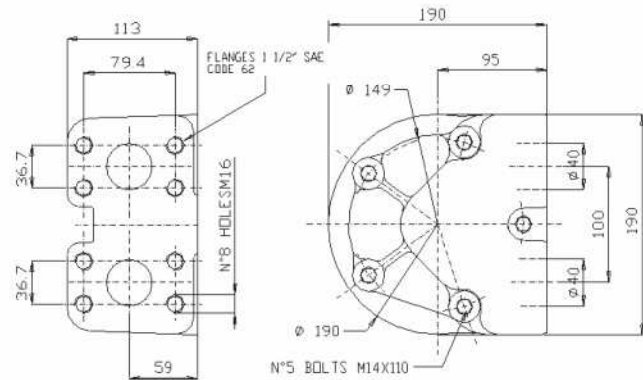


D90

Standard distributor for GM6 series motors.

Distributore standard per motori della Serie GM6.

Weight : 14.5 kg

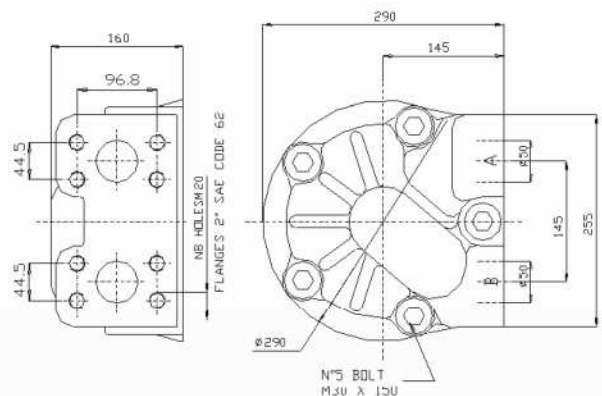


D250

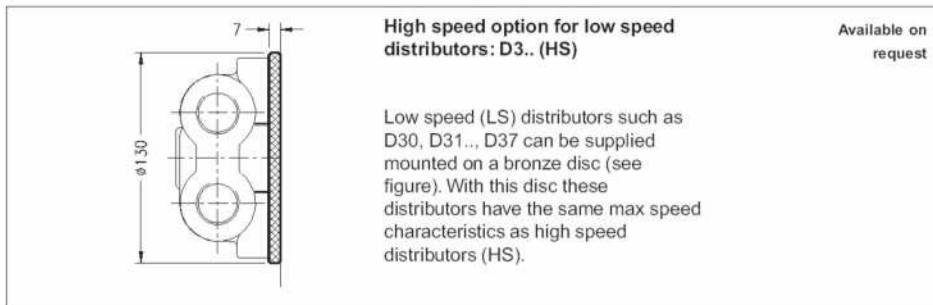
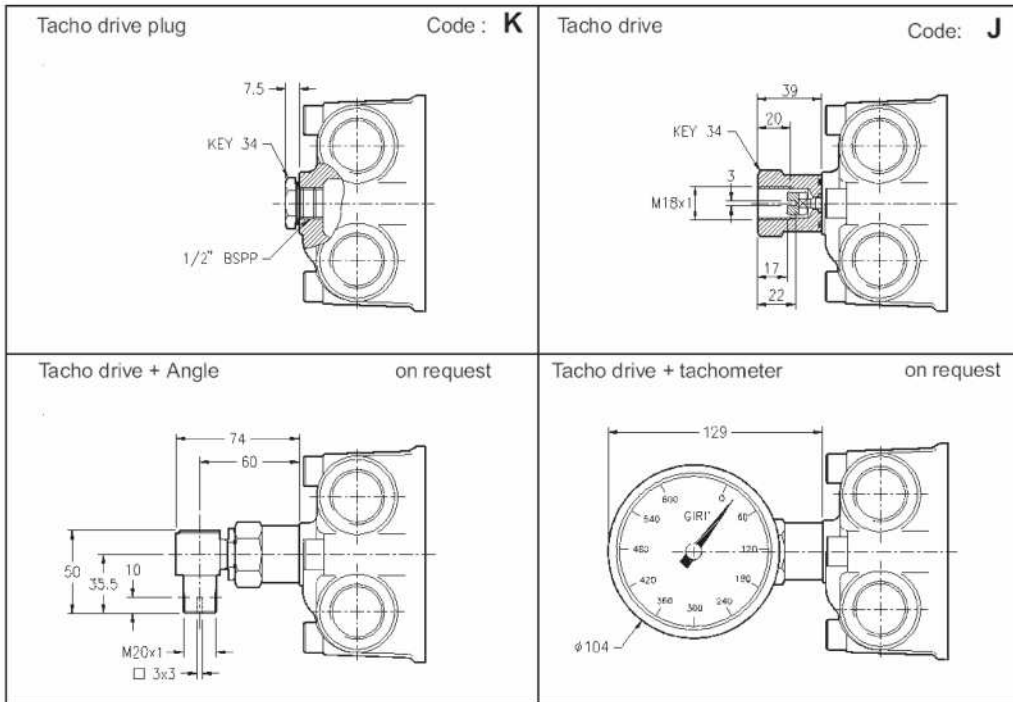
High flow distributor.

Distributore a portata elevata.

Weight : 50 kg



MECHANICAL TACHOMETER



DISTRIBUTOR ORDER CODE

DESCRIPTION	CODE	
(7) DISTRIBUTOR TYPE	D...	
(8) Valve pressure setting (bar)	(...)	
(9) Prepared for tacho drive Tacho drive	K J	

Available on request:

Note: standard distributors are supplied with a steel anti-extrusion ring for the main seal in the rotor which is suitable for suitable for high pressure operation.

- The distributors may be supplied with seals in different materials.
- Special distributor for silent running motors
- Intermediate bronze disc for high speed operation with low speed distributors